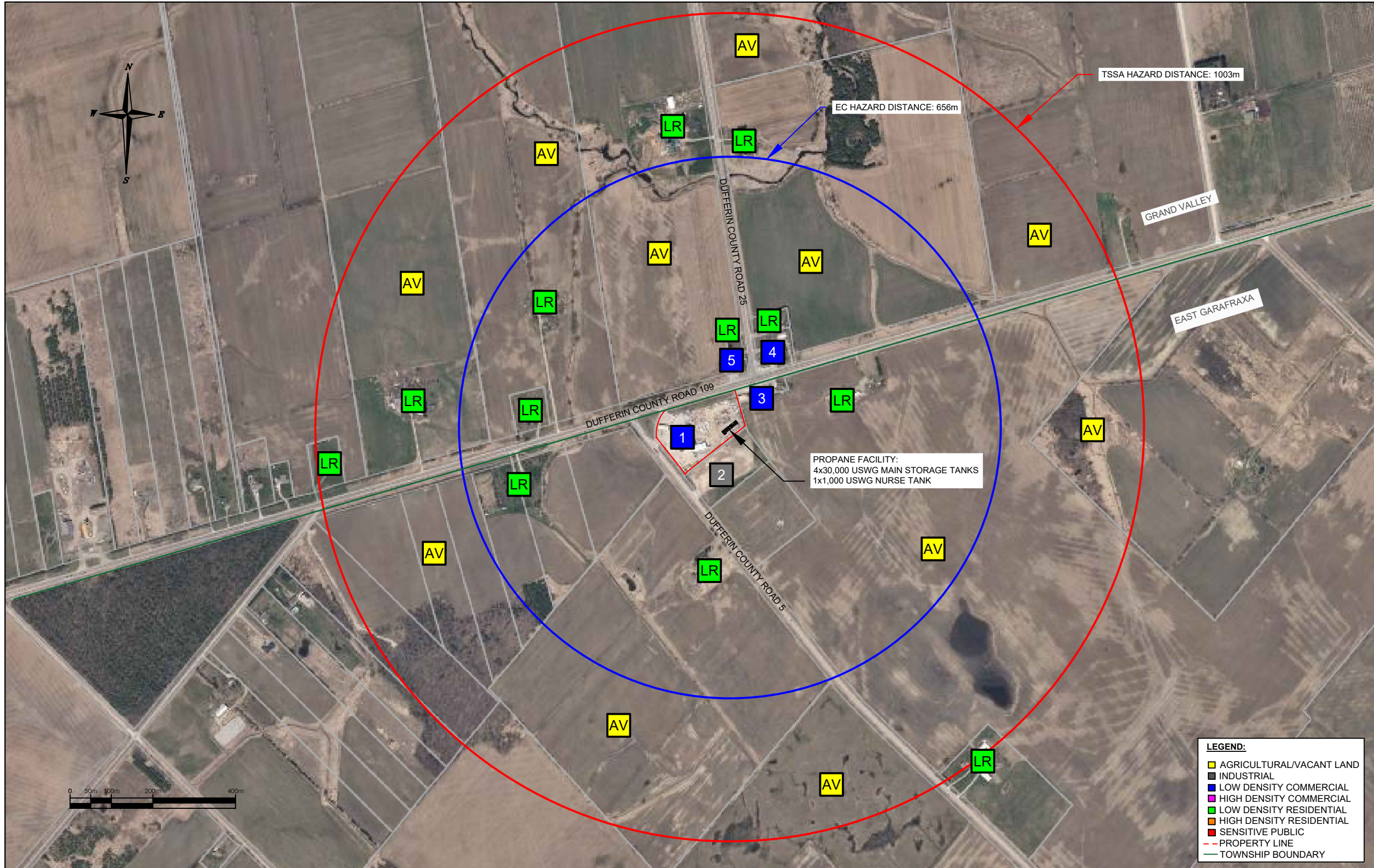


202350 Dufferin County Road 109, East Garafraxa



PUBLIC RECEPTORS	
1	GRAND VALLEY HOME HARDWARE
2	FS PARTNERS
3	CANADIAN CLEAR-OUT
4	ULTRAMAR
5	KELLY'S KORNER RESTAURANT
LR	LOW DENSITY RESIDENTIAL
AV	AGRICULTURAL / VACANT LAND

ADDRESS:  
202350 DUFFERIN COUNTY ROAD 109, EAST GARAFRAXA, ON

GPS COORDINATES:  
43°52'24.8"N; 80°18'37.9"W

LEGAL DESCRIPTION:  
EAST GARAFRAXA CON 13 PT; LOTS 19 AND 20 RP 7R6029; PART 1

ZONING:  
HIGHWAY COMMERCIAL CH-2

TANK SETBACKS TO PROPERTY LINES:  
NORTH: 236'-4" (72.1m)  
SOUTH: 53'-10" (16.4m)  
EAST: 53'-10" (16.4m)  
WEST: 437'-7" (133.4m)

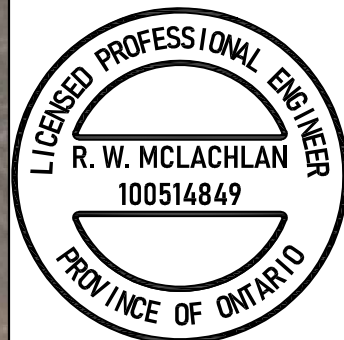
TOWNSHIP OF EAST GARAFRAXA CONTACT INFORMATION:  
SUSAN M. STONE, CAO/CLERK-TREASURER  
065371 DUFFERIN COUNTY ROAD 3, UNIT 2, EAST GARAFRAXA ON, L9W 7J8,  
T: 226-259-9400, EXT 202  
F: 226-212-9812

TOWNSHIP OF GRAND VALLEY CONTACT INFORMATION:  
JANE WILSON, CAO/CLERK-TREASURER  
5 MAIN ST. N., GRAND VALLEY, ONTARIO, L9W 5S6  
T: 519-928-5652 EXT. 224  
F: 519-928-2275

PLANNING ACT REQUIREMENTS:  
THE ARTHURS FUEL FACILITY RESIDES ALL WITHIN DUFFERIN COUNTY. THE HAZARD DISTANCE AS DEFINED BY THE TSSA ADVISORY FS-155-09, AT 88.6% CAPACITY FOR THE TSSA HAZARD DISTANCE, AND 100% FOR THE ENVIRONMENT CANADA HAZARD DISTANCE FOR THE SINGLE LARGEST CONTAINER. THE HAZARD DISTANCE EXTENDS INTO THE TOWN OF GRAND VALLEY.

**LEGEND:**

- AGRICULTURAL/VACANT LAND
- INDUSTRIAL
- LOW DENSITY COMMERCIAL
- HIGH DENSITY COMMERCIAL
- LOW DENSITY RESIDENTIAL
- HIGH DENSITY RESIDENTIAL
- SENSITIVE PUBLIC
- - - PROPERTY LINE
- TOWNSHIP BOUNDARY



				Client			Project No. JRS20001		Title ARTHURS FUEL GRAND VALLEY PUBLIC RECEPTORS DRAWING	
				Proprietary Notice - The information contained herein is proprietary to SLEEGERS ENGINEERED PRODUCTS INC. and shall not be reproduced or disclosed in whole or in part, not used for any reason whatsoever including research, development, design, and manufacturing except when such user possesses direct, written authorization from SLEEGERS ENGINEERED PRODUCTS INC.			Plot Size ANSI B		Scale AS SHOWN	
				SLEEGERS ENGINEERED PRODUCTS INC.			Drawing No. ART-GRV-PRD-01		Revision No. 1	
				5 Cuddy Blvd., London, Ontario, Canada N5V 3Y3 Phone (519) 685-7444 Fax (519) 685-2882					Sheet 1 of 1	
Drawing No.	Reference Drawing	Rev	Date	Revision Notes	DRW	CHK	APP			
		1	07/21/2020	UPDATED MUNICIPAL CONTACT INFORMATION	MH	RM	RM			
		0	01/13/2020	INITIAL RELEASE	MH	JP	AF			